

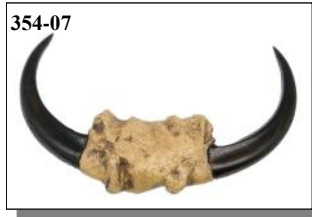
3090-1 Realistic Animal Parts

All of our realistic pieces shown in this section are made from quality plastic resin and are hand painted. They look so realistic that they have even fooled conservation officers! Please do not call to inquire about real eagle parts or offer to sell us eagle parts. We only deal in quality reproductions.

DOUBLE EAGLE TALISMAN

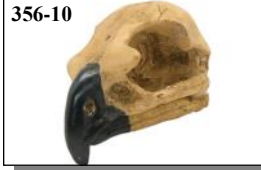
The Double Eagle Talisman is 2½" wide.

Made in the USA



Code	Description	Price
354-07	Double Eagle Talisman	\$12.67

REALISTIC HAWK & EAGLE SKULLS



Made in China

Our realistic skulls are some of the best on the market today. The hawk skulls are about 2" long and the eagle skulls are about 4¼" long.

Code	Description	1-5	6+
356-10	Realistic Hawk Skull	\$ 8.90	\$7.43
356-20	Realistic Eagle Skull	\$12.26	\$9.67

REALISTIC LION CLAWS

These plastic lion claws were cast from a real lion claw. They are 4" long along the outside curve and 2" wide across the top.

Made in the USA

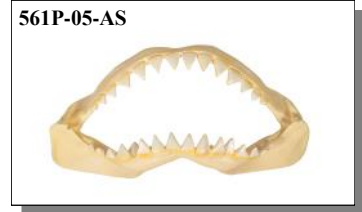


Code	Description	1-23	24+
1250-10	Realistic Lion Claw	\$18.60	\$14.88

PLASTIC SHARK JAWS

These are plastic shark jaws. The 5" wide jaws are 2½" tall.

Made in China



Code	Description	1-23	24+
561P-05-AS	Plastic Shark Jaw 5"	\$ 7.41	\$ 5.92

REALISTIC SMALL TURTLE SHELLS



The Realistic Turtle Shells measure 1⅜" by 1¼".

Made in the USA



Code	Description	1-23	24+
465	Realistic Small Turtle Shell	\$6.30	\$5.88

FRANK'S MISSING FINGERS



The Realistic Fingers are 3⅝" long and come in three types. They are casts from Frank's fingers.

Made in the USA

Code	Description	1-23	24+
517	Frank's Missing Finger	\$7.35	\$7.08

This space is intentionally blank.